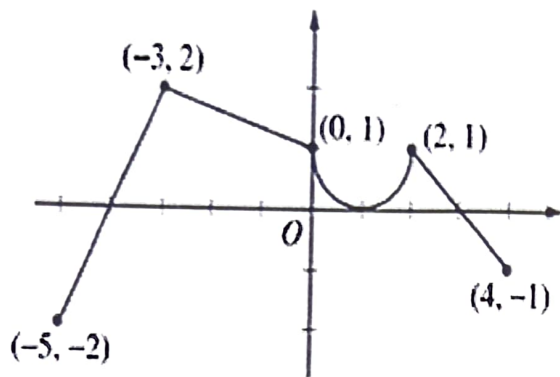


- 2) The figure shows the velocity v of a body moving along a coordinate line as a function of time t . Use the figure to answer the question.



- When is the particle moving to the right? Justify your answer?
- When is the particle moving to the left? Justify your answer.
- When is the particle stopped? Justify your answer.
- When is the acceleration negative. Justify your answer.
- When is the acceleration positive? Justify your answer.
- When is the acceleration undefined. Justify your answer.
- When is the acceleration zero. Justify your answer.
- When is the speed of the object decreasing? Justify your answer.
- When is the speed of the object increasing? Justify your answer.